

I-MUX

Inverse Multiplexer



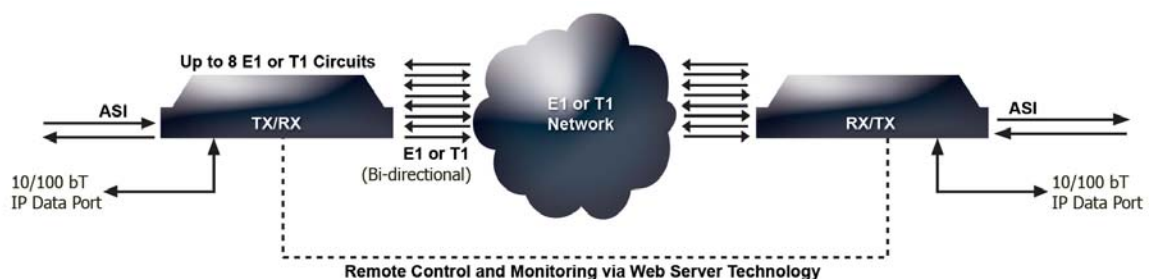
DVB-ASI and IP data over multiple E1/T1 lines



The I-Mux from ARG ElectroDesign combines up to 8 E1/T1 lines for error free high speed transfer of DVB-ASI and IP data.

I-Mux FEATURES and BENEFITS

- **Bandwidth tailoring**
Tailor your bandwidth provisioning to meet your bandwidth requirements by utilising up to 8 E1 (2.048 Mbps) or T1 (1.544 Mbps) circuits
- **Two levels of Reed Solomon error correction**
Standard 4 Byte format or 16 byte as an option
- **Caters for up to 64ms of differential delay**
The huge capacity buffer removes any concerns of diversely routed circuits
- **Bi-directional ASI data ports**
Support DVB ASI formats 188, 204PAD/RS
- **10/100 Base T IP data port**
Data in IP format can now be transmitted or received directly from a 10/100 Base T as an alternative to the ASI stream
- **T1 framing facilities**
The unit will provide T1 framing for those situations where framed circuits are provided by the Telco (primarily in the USA)
- **Optional web server interface**
Web server connection for remote monitoring and control
- **Dual power supplies**
Complete security of power supply
- **SNMP remote monitoring port**
A port is provided for connection to a SNMP monitoring system
- **Internal protection switching**
Provides a managed 'n+1' protection capacity across unused E1/T1 lines



I-MUX

Inverse Multiplexer



Versions Available

Error Correction	4 Byte RS FEC	16 Byte RS FEC
MPEG Payload per E1 link	1.97 Mb/s	1.85 Mb/s
Maximum MPEG Payload per E1 System (8 links)	15.76 Mb/s	14.8 Mb/s
MPEG Payload per T1 link	1.48 Mb/s	1.40 Mb/s
Maximum MPEG Payload per T1 System (8 links)	11.84 Mb/s	11.2 Mb/s

Technical Specifications

MPEG Interface

DVB ASI Compliant
ASI formats supported: 188, 204 PAD/RS

E1/T1 Circuit Interface

Complies with ITU-T G.703
Jitter compliance: ITU-T G.823
Impedance: 75 ohm unbalanced
120 ohm balanced

IP Data Port

10/100 base T data port

System

Maximum number of bi-directional E1/T1 links: 8
Maximum delay variance between links : 64ms

System Error Correction

Reed-Solomon FEC, standard 4 Byte format
16 Byte as a factory fitted option

Management and Control

Front panel interface for local control
Remote monitoring is offered by optional web server and SNMP

Mechanical

Height: 43.6mm (1U)
Width: 482.6mm (19")
Depth: 383mm (15") incl. connectors
Weight: 5.6kg (12.3lbs)

Power Supply

Dual supply, single phase auto-ranging
Choice of: 100-240VAC (50-60Hz)
or: 48V DC (factory fitted option)

Environmental

Operating temperature: 0°C to 40°C
Storage temperature: -5°C to 70°C