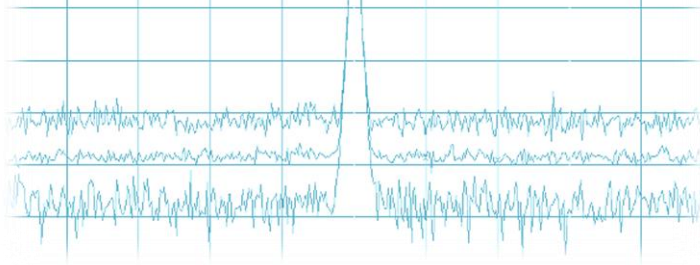




LPT-SMART



Overview

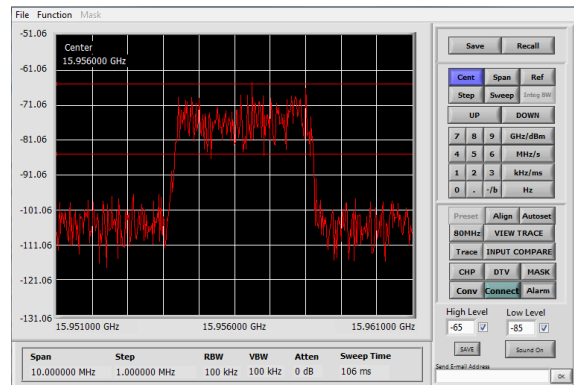
The LPT-SMART is *The Alternative to Expensive Carrier Monitoring Systems*

The LPT-SMART allows real-time system monitoring of LPT-3000, LPT-6000 and LPT-3000R Spectrum Analyzers remotely via TCP/IP.

The LPT-SMART is designed with special functions and features directly based on customer recommendations.

Features

- ❖ Visual and Sound Alarm Notifications
- ❖ Out of Spec E-mail Notification
- ❖ E-mail-ready Images of Traces
- ❖ Scheduled LOGOFF
- ❖ Unlimited Memorized Presets
- ❖ Full Screen Live Trace Display



LP Technologies, Inc.

Client Machine 1
Controlling Remote Panel



Server Machine
running LPT-SMART



Remote LPT-3000R



Client Machine 2
Viewing Remote Panel



- ❖ Multi-User Control and Monitor
- ❖ Multi-Analyzer Control
- ❖ Multi-Site Automatic Polling
- ❖ Multiple Units Storage Database
- ❖ Multiple Signals Input Compare
- ❖ Multiple Simultaneous Trace Display

LP Technologies, Inc.

1919 N. Amidon St, Suite #216, Wichita, KS 67203

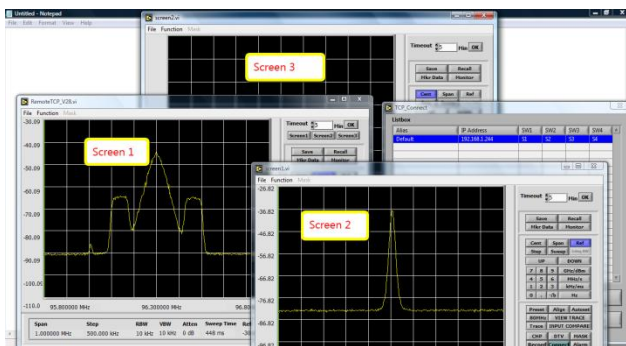
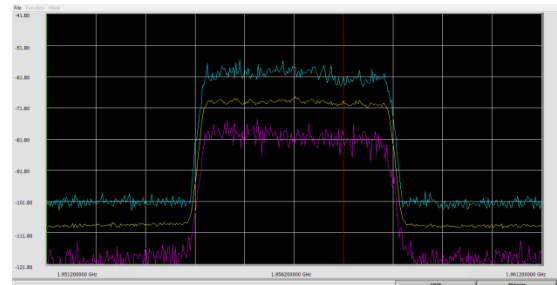
Tel: 316-831-9696 Fax: 316-831-9692 E-mail: sales@lptech.com Web: www.lptech.com

- ❖ Record Marker Data to a file
- ❖ Record Marker Delta Levels
- ❖ Record Marker Delta Frequency Readouts
- ❖ Data exportable to 3rd party software programs
- ❖ Keyboard Data Entry



A	B	C	D	E	F	G	H	I	J	K	L
Date_Time	Mrk1Freq	Mrk1Ref	Mrk2Freq	Mrk2Ref	Mrk3Freq	Mrk3Ref	Mrk4Freq	Mrk4Ref	DeltaMrk2Freq	DeltaMrk2Ref	DeltaMrk3Freq
09152010_092912	1.956275 GHz	-71.80 dBm	1.958925 GHz	-106.09 dBm	1.959850 GHz	-106.27 dBm	0 Hz	0 dBm	2.650000 MHz	-34.29 dB	3.575000 MHz
09152010_092913	1.956275 GHz	-71.88 dBm	1.958925 GHz	-106.09 dBm	1.959850 GHz	-106.27 dBm	0 Hz	0 dBm	2.650000 MHz	-34.21 dB	3.575000 MHz
09152010_092913	1.956275 GHz	-71.88 dBm	1.958925 GHz	-106.11 dBm	1.959850 GHz	-106.33 dBm	0 Hz	0 dBm	2.650000 MHz	-34.23 dB	3.575000 MHz
09152010_092913	1.956275 GHz	-71.87 dBm	1.958925 GHz	-106.11 dBm	1.959850 GHz	-106.37 dBm	0 Hz	0 dBm	2.650000 MHz	-34.24 dB	3.575000 MHz
09152010_092913	1.956275 GHz	-71.86 dBm	1.958925 GHz	-106.11 dBm	1.959850 GHz	-106.37 dBm	0 Hz	0 dBm	2.650000 MHz	-34.25 dB	3.575000 MHz
09152010_092913	1.956275 GHz	-71.86 dBm	1.958925 GHz	-106.10 dBm	1.959850 GHz	-106.36 dBm	0 Hz	0 dBm	2.650000 MHz	-34.24 dB	3.575000 MHz
09152010_092913	1.956275 GHz	-71.91 dBm	1.958925 GHz	-106.07 dBm	1.959850 GHz	-106.35 dBm	0 Hz	0 dBm	2.650000 MHz	-34.16 dB	3.575000 MHz
09152010_092913	1.956275 GHz	-71.89 dBm	1.958925 GHz	-106.07 dBm	1.959850 GHz	-106.35 dBm	0 Hz	0 dBm	2.650000 MHz	-34.18 dB	3.575000 MHz
09152010_092913	1.956275 GHz	-71.89 dBm	1.958925 GHz	-106.07 dBm	1.959850 GHz	-106.34 dBm	0 Hz	0 dBm	2.650000 MHz	-34.18 dB	3.575000 MHz
09152010_092913	1.956275 GHz	-71.89 dBm	1.958925 GHz	-106.12 dBm	1.959850 GHz	-106.32 dBm	0 Hz	0 dBm	2.650000 MHz	-34.23 dB	3.575000 MHz
09152010_092913	1.956275 GHz	-71.88 dBm	1.958925 GHz	-106.12 dBm	1.959850 GHz	-106.32 dBm	0 Hz	0 dBm	2.650000 MHz	-34.24 dB	3.575000 MHz
09152010_092914	1.956275 GHz	-71.88 dBm	1.958925 GHz	-106.09 dBm	1.959850 GHz	-106.30 dBm	0 Hz	0 dBm	2.650000 MHz	-34.21 dB	3.575000 MHz
09152010_092914	1.956275 GHz	-71.93 dBm	1.958925 GHz	-106.12 dBm	1.959850 GHz	-106.25 dBm	0 Hz	0 dBm	2.650000 MHz	-34.19 dB	3.575000 MHz
09152010_092914	1.956275 GHz	-71.99 dBm	1.958925 GHz	-106.12 dBm	1.959850 GHz	-106.25 dBm	0 Hz	0 dBm	2.650000 MHz	-34.13 dB	3.575000 MHz
09152010_092914	1.956275 GHz	-71.99 dBm	1.958925 GHz	-106.09 dBm	1.959850 GHz	-106.26 dBm	0 Hz	0 dBm	2.650000 MHz	-34.10 dB	3.575000 MHz
09152010_092914	1.956275 GHz	-72.12 dBm	1.958925 GHz	-106.14 dBm	1.959850 GHz	-106.27 dBm	0 Hz	0 dBm	2.650000 MHz	-34.02 dB	3.575000 MHz
09152010_092914	1.956275 GHz	-72.02 dBm	1.958925 GHz	-106.14 dBm	1.959850 GHz	-106.27 dBm	0 Hz	0 dBm	2.650000 MHz	-34.12 dB	3.575000 MHz
09152010_092914	1.956275 GHz	-72.02 dBm	1.958925 GHz	-106.16 dBm	1.959850 GHz	-106.27 dBm	0 Hz	0 dBm	2.650000 MHz	-34.14 dB	3.575000 MHz

- ❖ Built-in Frequency Converter Table
- ❖ Max, Min and Active Traces
- ❖ Full Screen / Hide Controls View
- ❖ User Friendly Control Panel



- ❖ Software upgrades with new features
- ❖ Friendly Technical support

Please visit www.lptech.com for more info or

Call (1) 316-831-9696

LP Technologies, Inc.

1919 N. Amidon St, Suite #216, Wichita, KS 67203

Tel: 316-831-9696 Fax: 316-831-9692 E-mail: sales@lptech.com Web: www.lptech.com