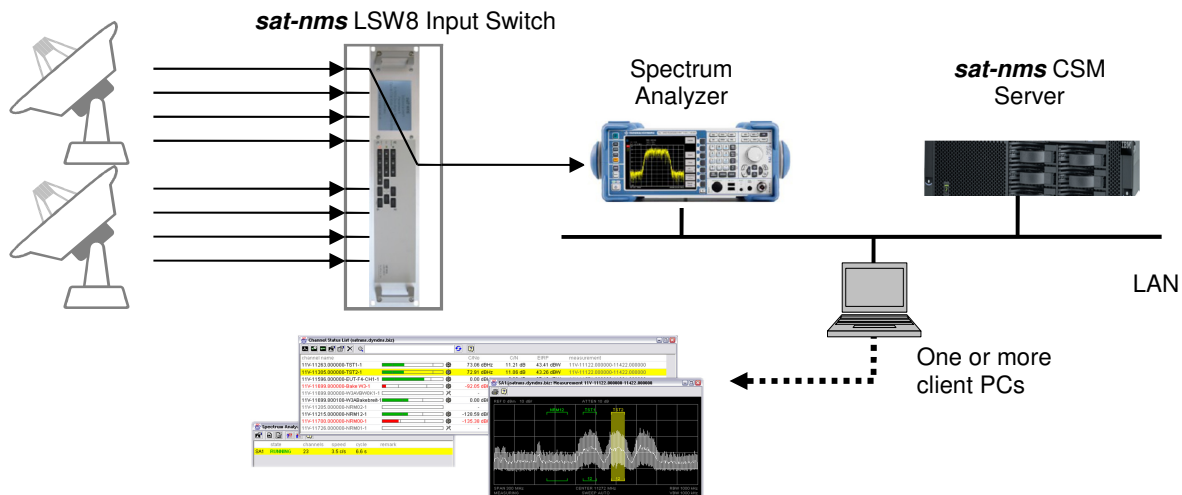


sat-nms LSW - L-Band Input Switch

You have just one measurement instrument but you have to monitor automatically 8 or even more input ports? Then our *sat-nms* LSW L-Band Input Switch is exactly what you need. You can select the input port of your spectrum analyzer or any type of other receiver via a web-browser interface or from an optional front panel. Switching may be initiated manually by the operator itself or if you use a computer controlled automatic measurement software or monitoring sequence you can control the L-Band Switch via SNMP, HTTP or RS232.



The design of the input switch cards is performed in such a way that we can cascade several input switch boards. In a 2RU 19" drawer, we can use up to 4 input switch boards resulting in a maximum of 32 input ports. The unit includes two power supplies with two independent mains voltage input connectors. Internal redundancy switchover between the two power supplies improves the availability of the unit. All modules are hot swappable without interrupting the users services.

Model Variants

The input switch is available in two versions, with or without a local control front panel. Which one you will select depends on your application demands. Do you need direct local control at the front panel or is it sufficient for you to perform local control via the web-browser?

Applications

- In any type of satellite ground station
- Automatic measurement systems
- Teleports with several antennas
- Cable head end stations

LSW8	Input Switch with 8 inputs, 1 output port
LSW16	Input Switch with 16 inputs, 1 output port
LSW24	Input Switch with 24 inputs, 1 output port
LSW32	Input Switch with 32 inputs, 1 output port
D	Append "D" to the model No. to order the unit with front panel keyboard and display: e.g.: <i>sat-nms</i> LSW8D
F	Append "F" to the model No. to receive 75Ohm F female output connectors instead of 50Ohm SMA

Key Features

- 19" compact Design in 2 RU
- Amplitude Flatness over whole L-Band Frequency Range
- Front Panel Display and Keypad as Option
- SNMP, TCP/IP and HTTP web-browser Interface
- Dual redundant Power Supplies
- 50 (SMA) or 75Ohm (F) Output Ports

Contact Information

SatService
Gesellschaft für Kommunikationssysteme mbH

Hardstrasse 9, D-78256 Steisslingen, Germany
Phone: +49 7738 99791 10
Fax: +49 7738 99791 99
E-Mail sales@satservicegmbh.de

www.satnms.com www.satservicegmbh.de

Technical Specification

RF Specification

Frequency Range	950 to 2150MHz
L-Band Input Connectors	SMA female 50Ohm
L-Band Output Connectors	SMA female 50Ohm or F Female 75 Ohm
Input Return Loss	> 17dB
Output Return Loss	> 17dB
Input Noise Figure	< 13dB
Gain	0 +/-1dB
Flatness	+/-1.5dB, +/-0.25dB in any 40MHz
Gain Stability	+/-0.25dB/24h
OIP3	> +10dBm
Intermodulation at -13dBm Input Level	<-40dBc
Isolation	In → In 35dB In → Out 35dB On/off 35dB

Local Control

Web-browser or optional front panel keypad and LCD Display

MNC Interface Specification

Ethernet Interface for MNC and User Interface	10-Base-T, Via HTTP GET Requests or SNMP
Front Panel Display (optional)	Graphical LCD 16x32
RS232 MNC Interface	D-SUB 9 female
Summary Fault Indication	Relay Contact D-SUB 9 male

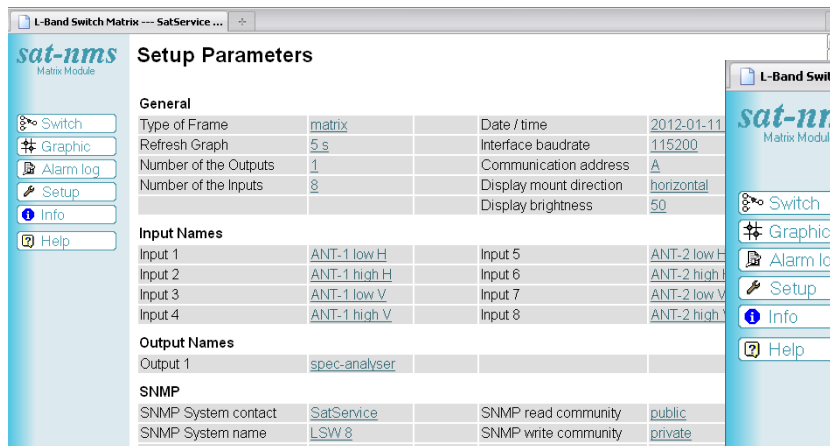
Electrical and Mechanical Specification, Environmental Conditions

Supply Voltage	90 to 230V AC 50 to 60Hz
Power Consumption	30VA
Connector for the two Mains Voltage AC Inputs	IEC
Temperature Range	10 to +40°C
Humidity	Up to 90% non-condensing
Mechanical Size	436 x 89 x 350 mm, 19" 2RU



sat-nms LSM Front Panel with LCD Display and Keypad

sat-nms LSM8 Rear Panel



Web Interface Configuration Page

Web Interface select Input Port

